



Industrial Coils

- **MODEL : SCR-D**

Straight single tube pass with opposite end connections. Recommended for light duty applications. Available in one row and two rows.



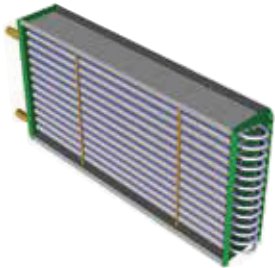
- **MODEL : SCR-NF (NON-FREEZE)**

Straight tubes using an internal distributor tube. Recommended for below freezing temperatures on the air side with a constant minimum steam pressure of 5 PSIG.



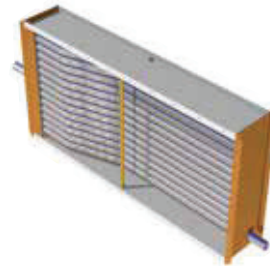
- **MODEL : SCR-U**

Two rows two passes circuit with same end connection. Recommended for steam applications 15 PSIG or greater.



- **MODEL : SCR-FLEX**

Single tube pass with opposite end connections. Recommended for a variety of pressures and temperatures which allows expansion of the tubes with rigid piping. Available in one row and two rows.



Applications

- Boiler air preheating;
- Pulp and paper drying process
- Lumber drying process
- Textile drying process;
- Chemical heating process.

Features

- All Enerfin industrial coils are made with our own extruded aluminum fins, 7FPI, 9FPI and 11 FPI.
- We have a full range of standard sizes and we can optimise any application to suit your requirements.
- Enerfin industrial coils can be supplied in a self supporting frame in which pull out drawer type coils can be serviced individually.

Material

- Liner tubes are selected from a variety of material such as carbon steel, stainless steel, cu/ni 90/10, titanium and others.



Enerfin Inc.

130, de l'Isere Street
Candiac (Quebec) Canada J5R 0M2
• Telephone : +1 (450) 444-3633
• Fax : +1 (450) 444-3895
• Toll free : +1 (800) 724-2919